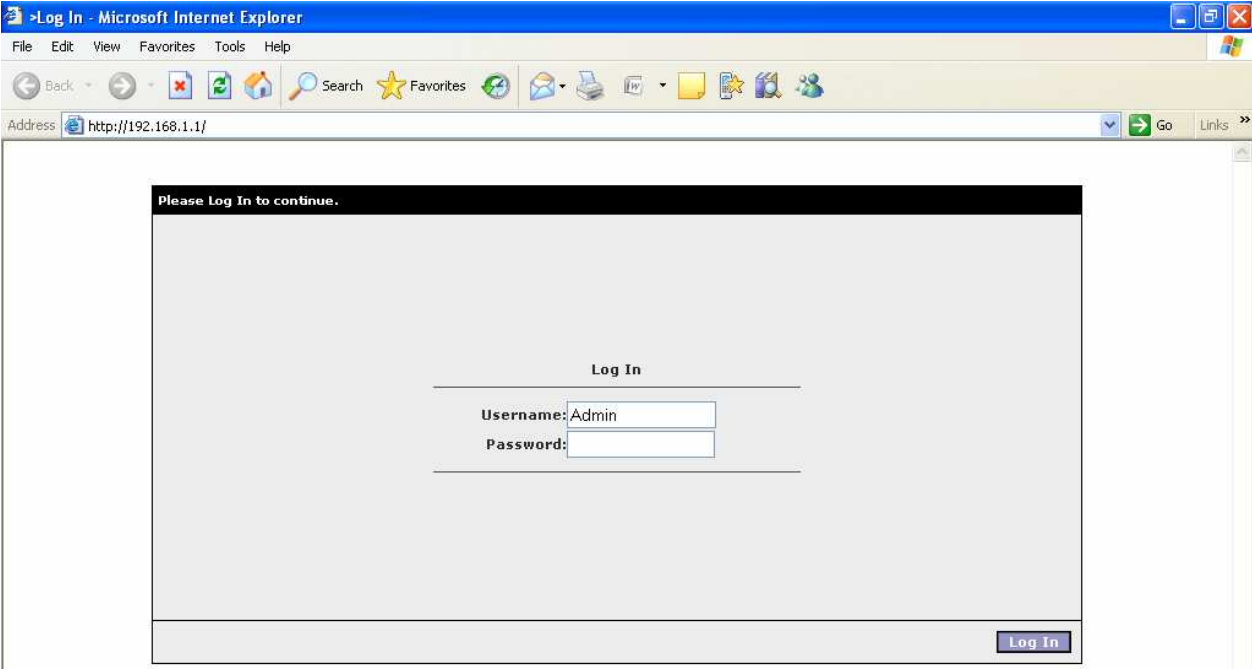
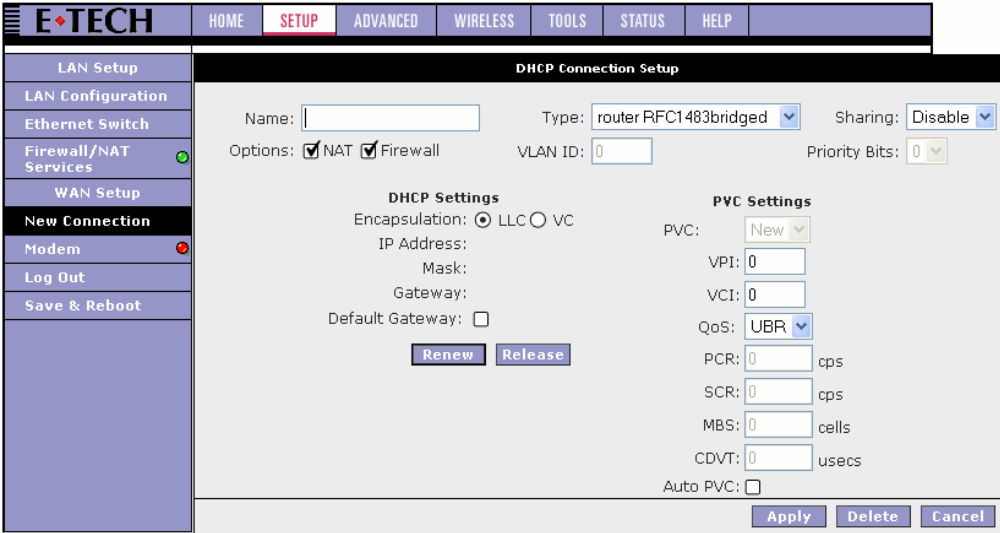


CONFIGURARTION FOR E-TECH MODEMS

- 1. Type '192.168.1.1' in the address bar
- 2. Username: Admin
- 3. Password: Admin



- 4. You must click on: New Connection



5. Name: Vox or Voxmobile
6. Type: PPPoE
7. Sharing: Disable
8. Username: From Voxmobile
9. Password: From Voxmobile
10. VPI: 8
11. VCI: 35
12. QoS: UBR
13. You must click on Apply

E+TECH HOME **SETUP** ADVANCED WIRELESS TOOLS STATUS HELP

LAN Setup
LAN Configuration
Ethernet Switch
Firewall/NAT Services
WAN Setup
New Connection
Modem
Log Out
Save & Reboot

PPPoE Connection Setup

Name: Type: Sharing:

Options: NAT Firewall VLAN ID: Priority Bits:

PPP Settings

Username: Password:

Idle Timeout: secs
Keep Alive: min
Authentication: Auto CHAP PAP
MTU: bytes
On Demand: Default Gateway:
Enforce MTU: Debug:
PPP Unnumbered: LAN:

14. You must click on Save & Reboot

E+TECH HOME **SETUP** ADVANCED WIRELESS TOOLS STATUS HELP

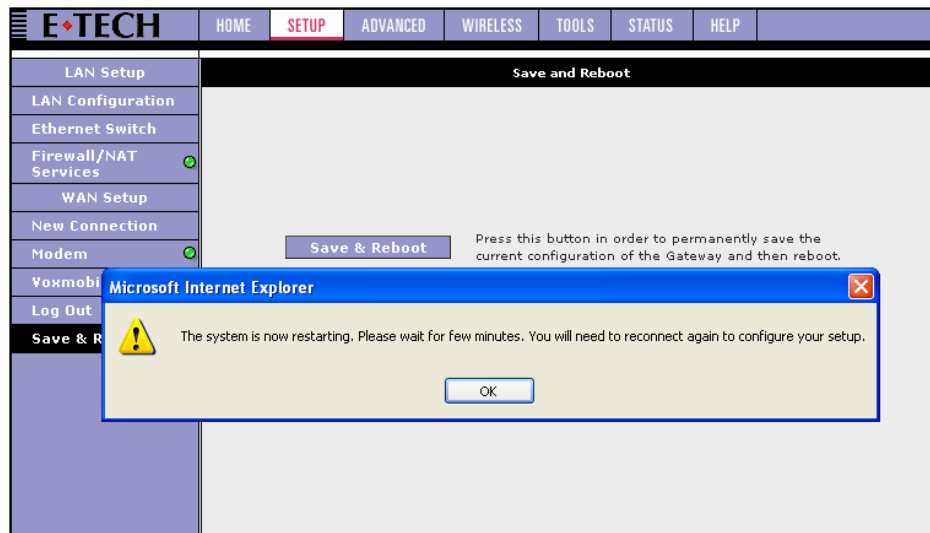
LAN Setup
LAN Configuration
Ethernet Switch
Firewall/NAT Services
WAN Setup
New Connection
Modem
Voxmobile
Log Out
Save & Reboot

Save and Reboot

Press this button in order to permanently save the current configuration of the Gateway and then reboot.

Use this button to reboot the system.

15. You click on OK



16. Router is restarting and you receive at new the first page. Now the router is configured.

